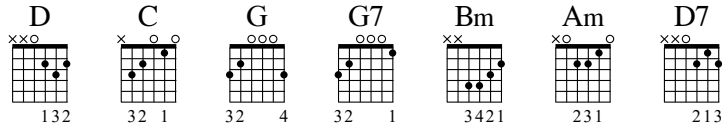


I Feel Fine

Words and Music by John Lennon and Paul McCartney

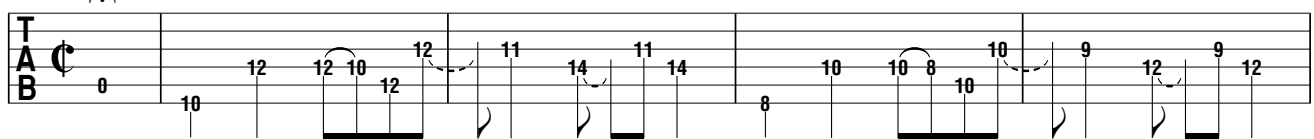


Key of G

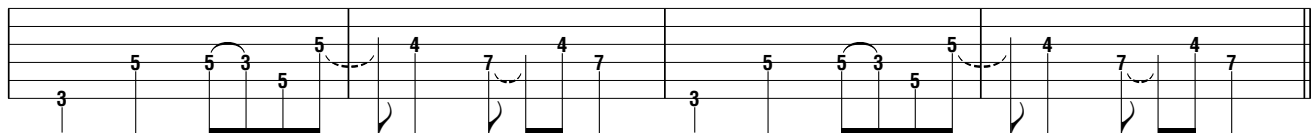
Intro

Moderately

N.C. D C



G



Verse

Strum
G7

1. Ba - by's good to me, | you know, she's hap - py as can be, |
 2., 3. Ba - by says she's mine, | you know she tells | me all the time, |

D

you know she said | so. }
 you know she said | so. }

C

G

I'm in love with her | and I feel | fine. | :||

Chorus

G

Bm

C

D

I'm so | glad that | she's my lit-tle girl. |

Copyright © 1964 Sony/ATV Music Publishing LLC

Copyright Renewed

All Rights Administered by Sony/ATV Music Publishing LLC, 424 Church Street, Suite 1200, Nashville, TN 37219

International Copyright Secured All Rights Reserved

G Bm Am D7
 | She's so | glad, she's | tell - ing all the world. | 3. That her ba - ||

Verse

G7
 | - by buys her things, | you know, he | buys her dia - mond rings, | you know, she said |

To Coda

D C
 | so. | | She's in love with me | and I feel |

Guitar Solo

G G7
 | fine. | || |

w/ Intro riff

D
 | | | | |

D.S. al Coda
(no repeat)

C G
 | | | | | ||

Coda

G D C
 | fine. | | She's in love with me | and I feel |

Outro

Repeat and fade

G G
 | fine. | | Mm. ||: | Mm. :||